



SERVICE BULLETIN

Classification:	EL95-011	Reference:	NTB95-093	Date:	September 20, 1995
-----------------	----------	------------	-----------	-------	--------------------

KEYLESS ENTRY REMOTE SWITCH ASSEMBLY: BATTERY REPLACEMENT AND RE-PROGRAMMING PROCEDURE

APPLIED VEHICLES: 1995 Maxima GLE, GXE (option), SE (option) (A32)
 1995 300ZX, all (Z32)
 1995 240SX SE (S14)
 1995 Sentra GLE (B14)
 1995 200SX SE-R (B14)

SERVICE INFORMATION

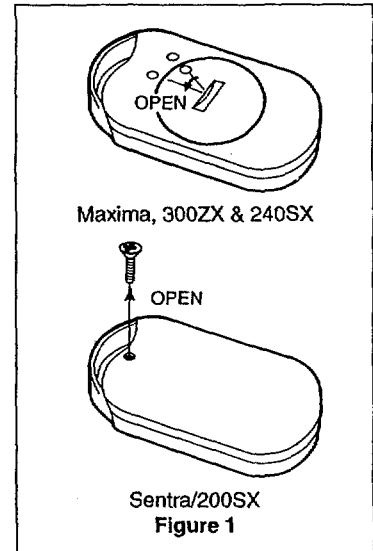
If a Nissan remote switch assembly (remote controller) fails to operate, or operates intermittently, use the following procedures to bring it back into proper operation.

SERVICE PROCEDURE

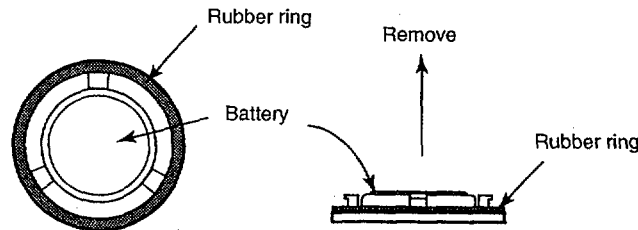
Remote Controller Battery Check and Replacement

1. Remove the remote controller battery lid (Figure 1).
For Maxima, 300ZX and 240SX only: Use a suitable tool, a quarter works best.

CAUTION: Do not use a screwdriver or a knife. These tools may damage the cover.



2. Remove the remote controller battery(s) from the lid (Figure 2).

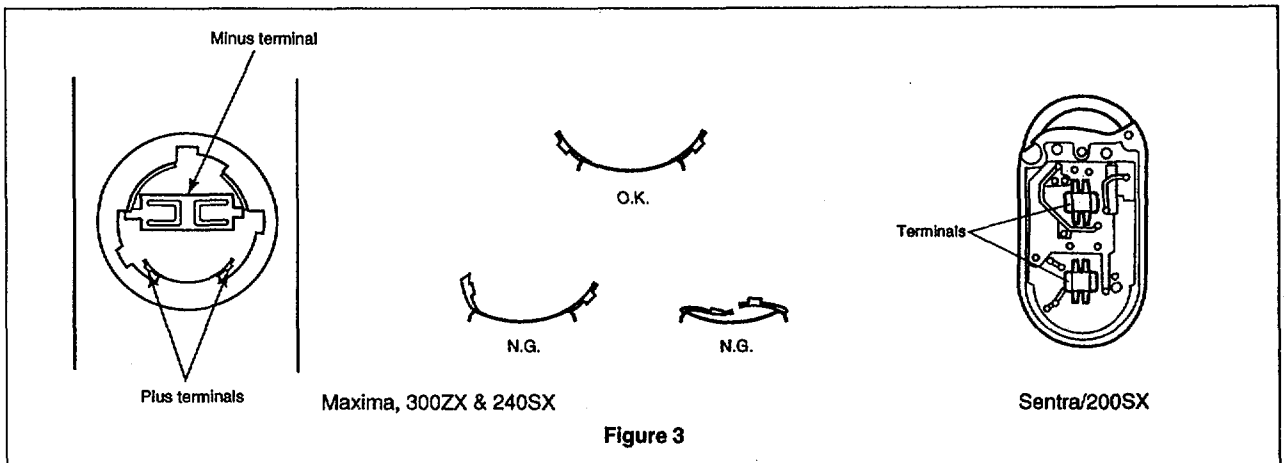


Maxima, 300ZX & 240SX

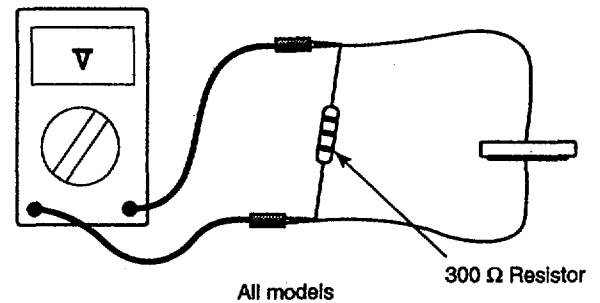
Figure 2

.....
Index # 044567
.....

3. Check the remote controller terminals. Clean and repair as necessary (Figure 3).

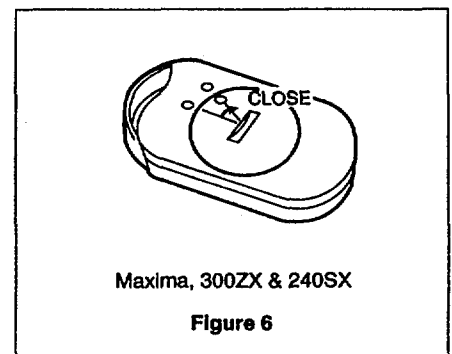
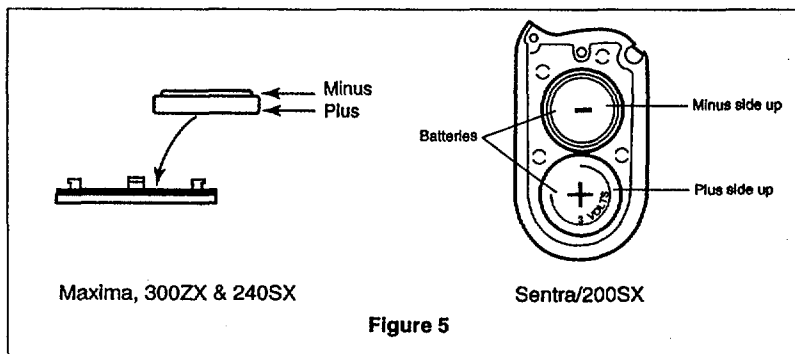


4. Use a high impedance volt-ohmmeter and a 300 ohm resistor in parallel to check the voltage of the remote controller battery(s) (Figure 4). If 2.5 volts or greater, the battery is O.K. If less than 2.5 volts, replace the battery(s). (300 ohm resistors are available from local electronics suppliers, e.g. Radio Shack.)



NOTE: If you do not have a 300 ohm resistor, install a new battery(s).

5. With the battery(s) removed, "reset" the remote controller by pressing the door lock button on the remote controller one time.
6. Install the battery(s) onto the lid properly (Figure 5).



7. Install the lid with the battery(s) onto the controller (Figure 6). **For Maxima, 300ZX & 240SX only:** Include the rubber ring and turn the lid to the close position.

NOTES: 1. Make sure the lid cover mark and the controller mark are aligned properly. If not, there is a possibility the plus terminals in the controller are deformed. The battery(s) will discharge quickly if the plus and minus terminals are shorted.

2. Do not deform the rubber ring.

8. Press the buttons several times near the vehicle to check their operation.

Remote Controller Battery Part Number

Battery Type	Part Number
Aftermarket 3VDC Battery (e.g., Sanyo, Eveready, Radio Shack)	CR2025 (for A32, Z32 & S14) CR2016 (for B14)

NOTE: Under normal circumstances, it is not necessary to “re-program” the remote controller when a battery is replaced.

Remote Controller “Re-Programming” Procedure

This procedure is used when adding an extra remote controller to the vehicle; when replacing the remote controller or remote control unit. The procedure may also be used to “re-program” a remote controller that fails to function properly after a battery replacement.

If “re-programming” a remote controller that fails to function properly after battery replacement, restore the remote controller “reset” function as follows:

- Remove the remote controller battery(s).
- Press the door lock button on the remote controller one time.
- Re-install the remote controller battery(s).

To Program or “Re-Program” the Remote Controller

NOTE: If a vehicle has more than one remote controller, they must all be re-programmed at the same time.

For Maxima, 240SX and Sentra/200SX:

1. Close and lock all doors.
2. Insert and remove the ignition key more than six times within 10 seconds. This will erase any original ID codes from the remote control unit. (The hazard warning lamps should flash twice.)
3. Turn the ignition key to the “ACC” position.
4. Press the door lock button on the remote controller one time. (The hazard warning lamps will flash twice again.) This enters the remote controller ID into the remote control unit.
5. Complete ID enter mode by opening the driver’s side door. This cancels the ID enter/programming mode.

For 300ZX:

1. Open the rear hatch.
2. Close and lock all doors.
3. Insert and remove the ignition key more than six times within 10 seconds. This will erase any original ID codes from the remote control unit.
4. Manually unlock and lock the driver's side door once using the inside lock lever.
5. Press the door lock button on the remote controller one time. This enters the remote controller ID into the remote control unit.
6. Complete ID enter mode by opening the driver's side door. This cancels the ID enter/programming mode.

To Program Additional Remote Controllers (while still in ID enter/programming mode)

1. **For Maxima, 300ZX and 240SX:** *Manually* unlock the driver's door, then lock again with the door lock knob.
For Sentra/200SX: With the switch on the armrests, unlock the driver's door, then lock again with the switch on the armrest.
2. Press the door lock button on the additional remote controller once. This enters the additional remote controller ID into the remote control unit. (The hazard warning lamps will flash twice.)

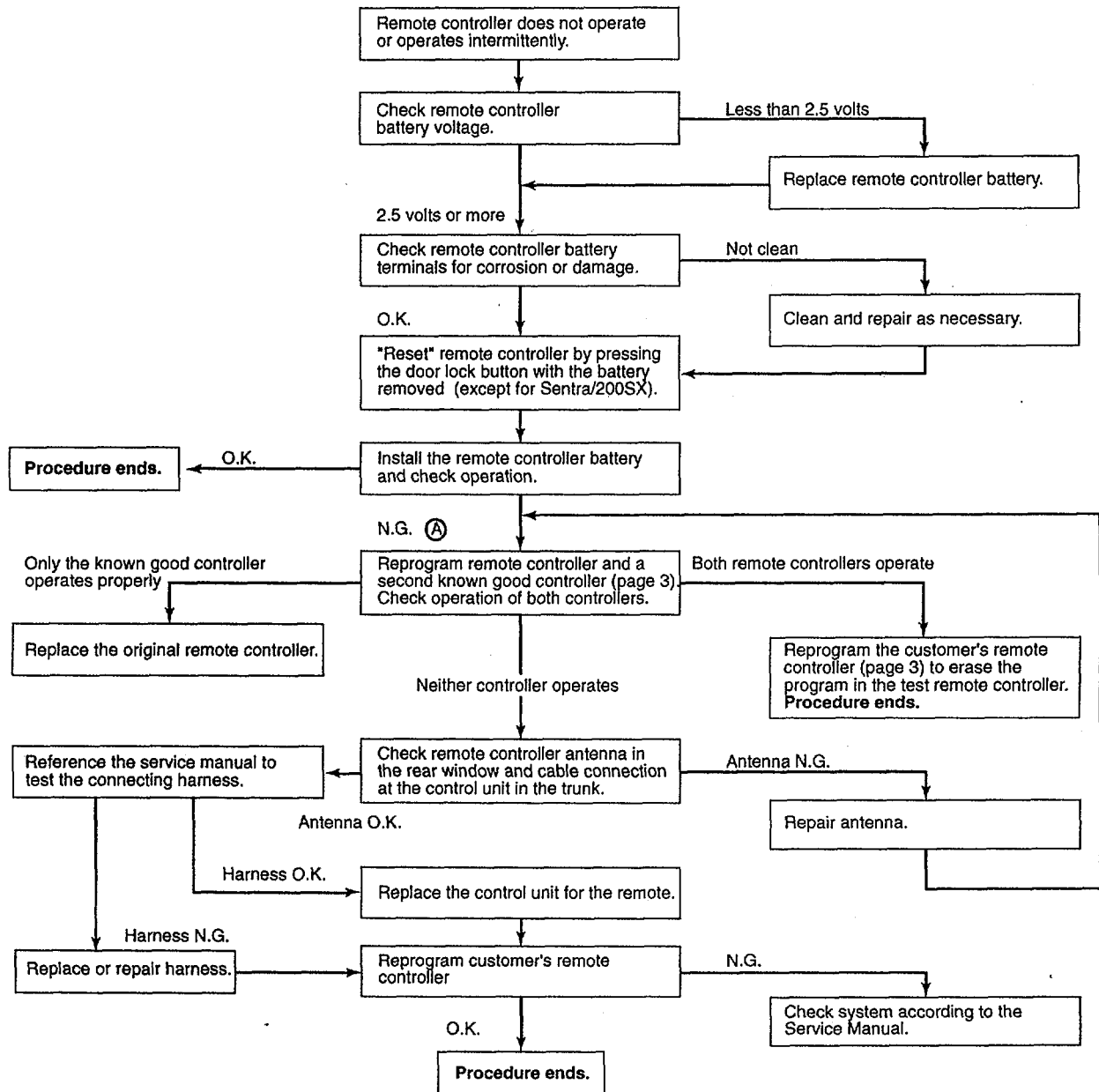
A maximum of four remote controllers can be programmed to the vehicle. Any attempt to enter more will be ignored.

In all cases, test the remote controllers for correct operation with the ignition key "OFF" and removed and all doors locked.

CLAIM INFORMATION

Remote controller replacement due to customer abuse, purse/pocket damage and/or loss is not covered by Warranty. The replacement of the remote controller battery is also not covered by Warranty. These are "customer pay" situations.

General Keyless Entry Remote Controller Troubleshooting Procedure



NOTE: If the vehicle has two remote controllers, check the second remote controller if the first does not function. If neither remote controller operates properly, start troubleshooting from (A).

Copyright © 1995 NISSAN MOTOR CORPORATION, U.S.A.
 Technical Communications Department

No part of this bulletin may be reproduced, stored in a retrieval system, or transmitted in any form, or by any means electronic, mechanical, photocopying, recording or otherwise, without the prior written permission of Nissan Motor Corporation U.S.A. Printed in U.S.A.